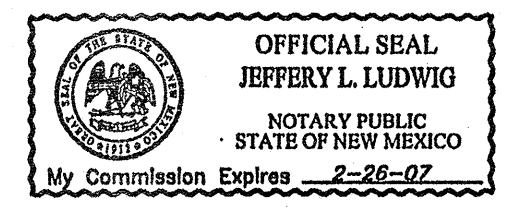


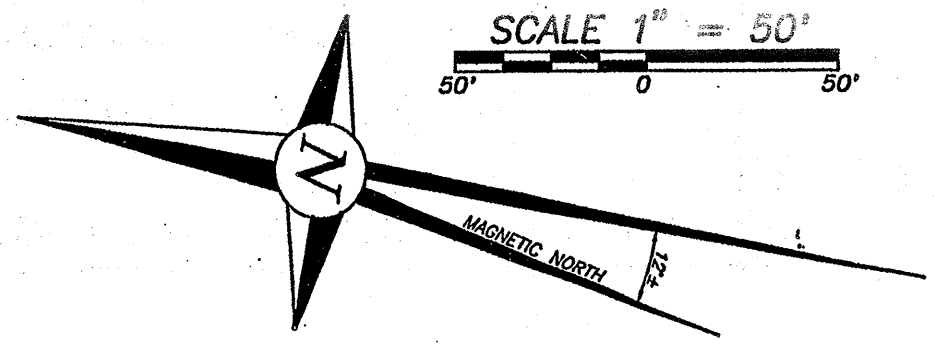
VICINITY MAP  
NOT TO SCALE

**UTILITY COMPANIES**  
 PUBLIC SERVICE COMPANY OF NEW MEXICO (ELECTRIC & GAS DIVISION) DATE 3-31-05  
 IN APPROVING THIS PLAT, PNM ELECTRIC SERVICES AND PNM GAS SERVICES DID NOT CONDUCT A TITLE SEARCH OF THE PROPERTIES SHOWN HEREON. CONSEQUENTLY, PNM DOES NOT WAIVE NOR RELEASE ANY EASEMENT OR EASEMENT RIGHTS WHICH MAY HAVE BEEN GRANTED BY PRIOR PLAT, REPLA OR OTHER DOCUMENT WHICH ARE NOT SHOWN ON THIS PLAT.  
 WEST COMMUNICATIONS DATE 4/1-05  
 COMCAST DATE 3-31-05

**CONSENT AFFIDAVIT**  
 KNOW ALL PERSONS BY THESE PRESENTS:  
 THAT THE UNDERSIGNED OWNER AND PROPRIETOR HAS REVIEWED THIS PLAT, SAID PLAT WAS PREPARED TO SHOW A LAND DIVISION OF THE STAGECOACH MOTOR INN TRACT, CREATING TWO LOTS, ONE LOT BEING 1.25 ACRES AND THE OTHER LOT BEING 3.15 ACRES, ALL AS SHOWN HEREON, LYING WITHIN THE CITY AND COUNTY OF SANTA FE, NEW MEXICO. ALL THAT APPEARS ON THIS PLAT IS MADE WITH THE FREE CONSENT AND IN ACCORDANCE WITH THE DESIRES OF THE UNDERSIGNED OWNER AND PROPRIETOR, THESE LANDS LIE WITHIN THE PLANNING AND PLATTING JURISDICTION OF THE CITY OF SANTA FE, NEW MEXICO. MAINTENANCE OF THE ACCESS EASEMENTS AS SHOWN HEREON IS TO BE THE RESPONSIBILITY OF THE LAND OWNERS/USERS. AN EASEMENT IS HEREBY GRANTED FOR ALL EXISTING PUBLIC UTILITIES WITHIN THE PLATTED LANDS.  
 SCOTT ITZEN DIEZ DATE 04-01-2005  
 STATE OF NEW MEXICO }  
 COUNTY OF SANTA FE }  
 ON THIS 1<sup>st</sup> DAY OF APRIL, 2005 THE FOREGOING INSTRUMENT WAS ACKNOWLEDGED BEFORE ME BY THE PERSON(S) WHOSE NAME(S) APPEAR ABOVE.  
 JEFFERY LUDWIG DATE 4-26-07  
 NOTARY PUBLIC COMMISSION EXPIRES



**CITY OF SANTA FE APPROVAL NOTES & CONDITIONS**  
 APPROVED BY THE SUMMARY COMMITTEE AT ITS MEETING ON 03/03/05 CASE #SP2005-07  
 CHAIRPERSON SECRETARY  
 SUBDIVISION ENGINEER DATE 4.11.05  
 CITY PLANNER DATE 4/11/2005

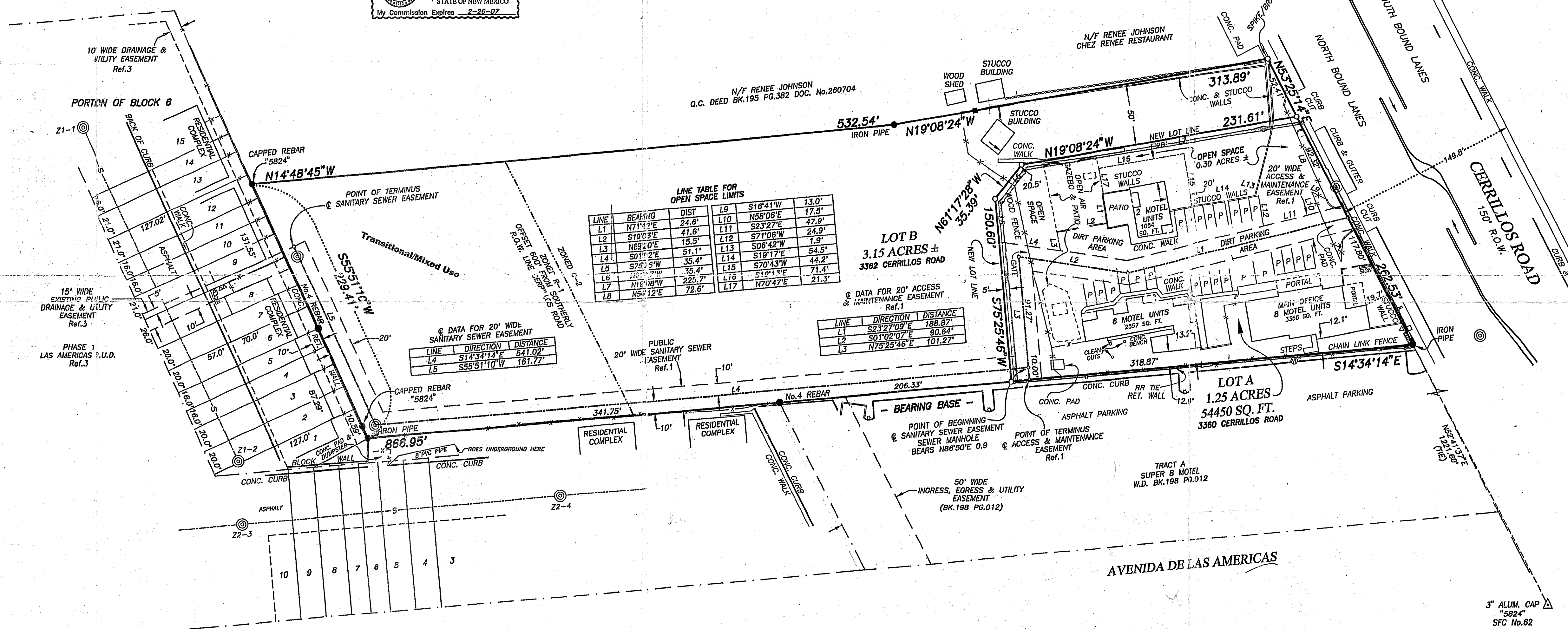


60099  
585003

**LEGEND/DEED-PLAT REFERENCES**

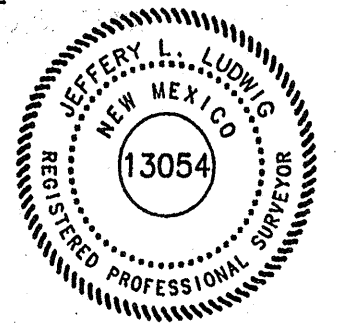
- REFERENCE A PLAT OF SURVEY TITLED, "BOUNDARY/EASEMENT SURVEY PREPARED FOR BERNARD E. CAWLEY, OF THE STAGECOACH MOTOR INN, CITY OF SANTA FE, SANTA FE COUNTY, NEW MEXICO," DATED 09/02/96 BY JEFFERY L. LUDWIG, N.M.L.S. 13054 AND FILED FOR RECORD IN THE OFFICE OF THE SANTA FE COUNTY CLERK IN BOOK 343, PAGE 047 AS DOC. No.957884.
- REFERENCE A WARRANTY DEED FILED FOR RECORD IN THE OFFICE OF THE SANTA FE COUNTY CLERK IN BOOK 2296 PAGE 983.
- REFERENCE A PLAT OF SURVEY TITLED, "FINAL PLAT, PHASE 1, LAS AMERICAS P.U.D. SUBDIVISION, WITHIN SECTION 5, T-16-N, R-9-E, N.M.P.M., SANTA FE, NEW MEXICO," DATED 5/17/82, BY EDWARD YUARTE, N.M.P.E. & P.S. No.6040, AND FILED FOR RECORD IN THE OFFICE OF THE SANTA FE COUNTY CLERK IN BOOK 124, PAGES 043-044. (SHEETS 1 & 2 OF 2) AS DOC. No.509931 & 509,932.
- REFERENCE A PLAT OF SURVEY TITLED, LOT CONSOLIDATION PLAT PREPARED FOR ROBERT C. & JOLENE A. HAYS, OF THE SUPER 8 MOTEL, WITHIN THE CITY OF SANTA FE, NEW MEXICO," DATED 3/89, BY RICHARD E. SMITH, N.M.L.S.5837 AND FILED FOR RECORD IN THE OFFICE OF THE SANTA FE COUNTY CLERK IN BOOK 198, PAGE 012 AS DOC. No.677740.

- MONUMENT FOUND AND USED OR AS NOTED.
- CAPPED REBAR "13054" SET OR AS NOTED.
- COMPUTED POINT.
- CONTROL MONUMENT
- UTILITY POLE, OVERHEAD UTILITY LINES, AND POLE GUY ANCHOR WHERE APPLICABLE.
- TELEPHONE PEDESTAL
- UTILITY BOX.
- GAS CONNECT.
- WATER METER.
- SEWER MANHOLE COVER
- FIRE HYDRANT
- LIGHT POLE
- P PARKING SPACE
- OS OPEN SPACE



**SURVEYOR'S CERTIFICATE**

I HEREBY CERTIFY THAT THIS BOUNDARY/LAND DIVISION SURVEY PLAT AND THE FIELD SURVEY ON WHICH IT IS BASED WAS MADE BY ME OR UNDER MY PERSONAL DIRECTION AND CONTROL, AND THAT THE DATA SHOWN HEREON ARE TRUE AND CORRECT TO THE BEST OF MY KNOWLEDGE AND BELIEF AND THAT THIS SURVEY MEETS OR EXCEEDS THE MINIMUM REQUIREMENTS OF THE STANDARDS FOR LAND SURVEYS IN NEW MEXICO AS ADOPTED BY THE NEW MEXICO STATE BOARD OF REGISTRATION FOR PROFESSIONAL ENGINEERS AND SURVEYORS. FIELD WORK UPDATED & VERIFIED IN 12/04.



Jeffery Ludwig DATE 03-31-05  
 JEFFERY L. LUDWIG N.M.L.S. 13054 DATE

COUNTY OF SANTA FE }  
 STATE OF NEW MEXICO }  
 I hereby certify that this instrument was filed for record on the 1<sup>st</sup> day of April, A.D. 2005 at 10:02 o'clock A.M. and was duly recorded in book 285 page 003 of the records of Santa Fe County. INS# 1315064  
 Witness my hand and Seal of Office Valeris Espinoza  
 County Clerk, Santa Fe County, N.M.  
 Valeris Espinoza Deputy



CORNERSTONE LAND SURVEYING  
 JEFFERY L. LUDWIG N.M.L.S. No.13054  
 505-690-7010 CELL  
 505-471-5477 OFFICE  
 P.O. BOX 8348  
 SANTA FE, NEW MEXICO 87504

UPC 1-050-096-441-276 INDEXING INFORMATION FOR COUNTY CLERK		BOUNDARY/LAND DIVISION SURVEY PLAT PREPARED FOR <b>SCOTT ITZEN DIEZ</b> OF THE <b>STAGECOACH MOTOR INN</b> 3360 & 3362 CERRILLOS ROAD CITY AND COUNTY OF SANTA FE, NEW MEXICO		SCALE 1" = 50' DATE 03/31/05 DRAWN-BY LUDY CHECKED-BY LUDY PROJECT No. 04-0151S
SECTION (6) PROJECTED 5	TOWNSHIP T-16-N	RANGE R-9-E	GRANT SANTA FE GRANT N.M.P.M.	