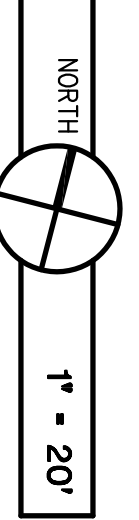
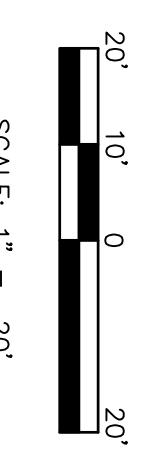
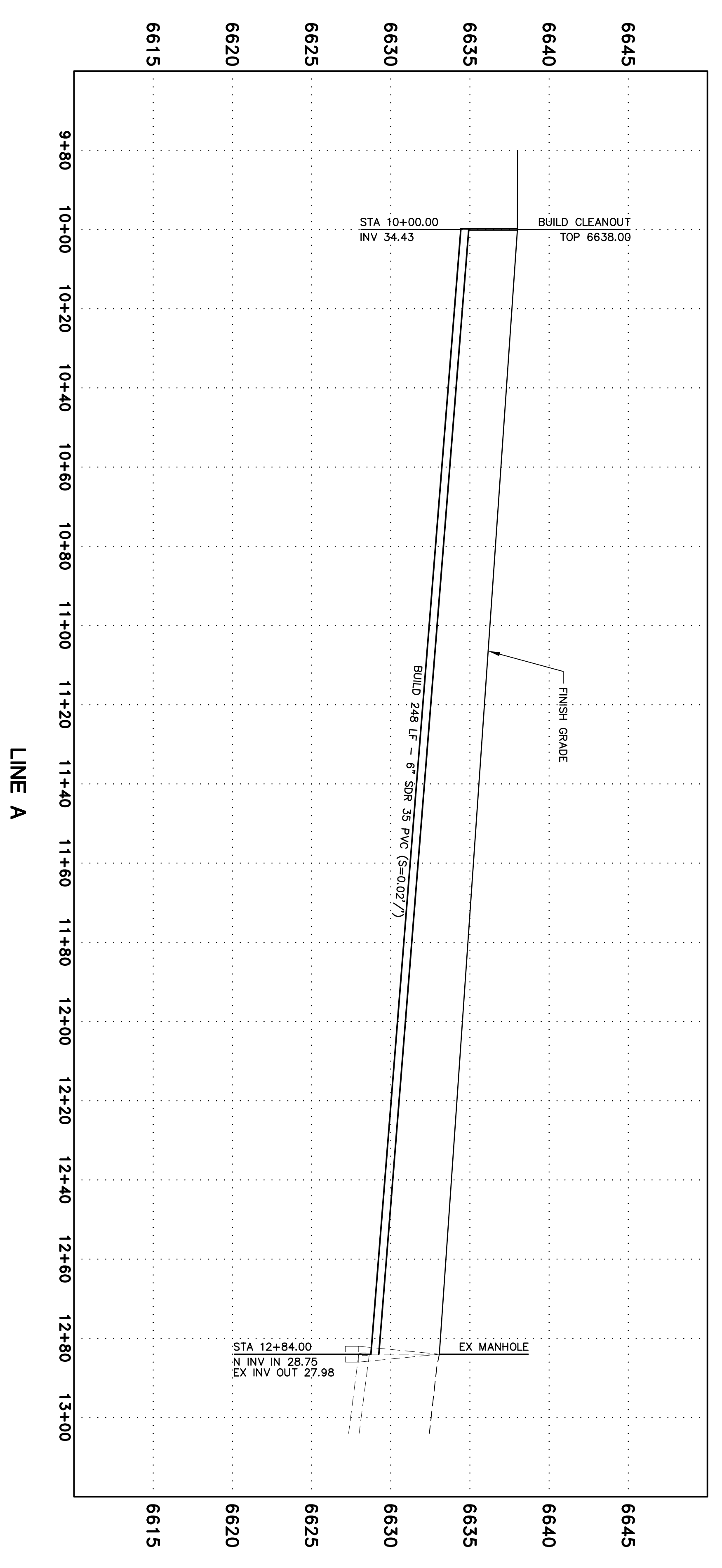
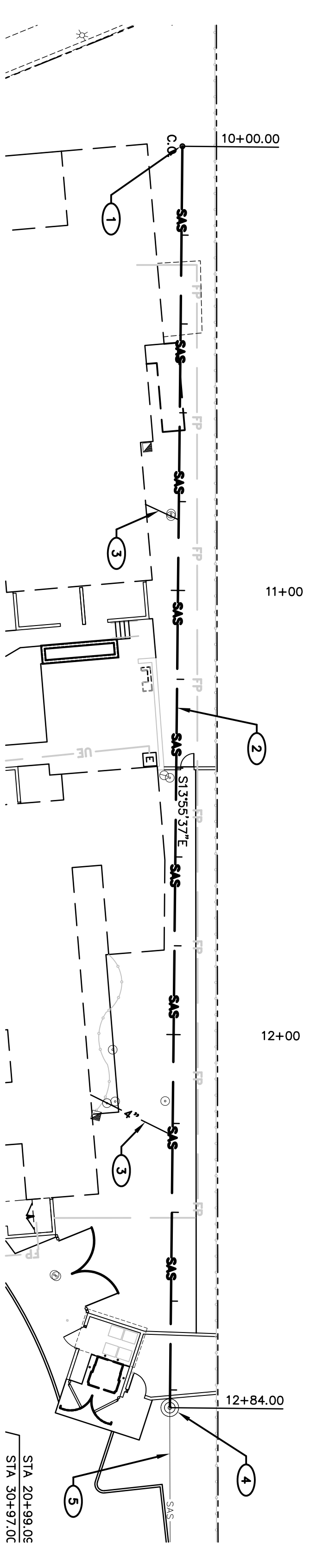


**General Notes**

- A. SITE UTILITY PLAN IS TO SPHERICALLY SHOW UTILITY RUNS. EACH UTILITY IS TO BE PLACED IN THE VICINITY SHOWN AND FIELD ADJUSTED TO BEST FIT FIELD CONDITIONS. BEFORE AND DURING INSTALLATION THE CONTRACTOR SHALL COORDINATE WITH ALL UTILITY COMPANIES.
- B. IF ANY UTILITY LINES, PIPELINES OR UNDERGROUND UTILITY LINES ARE SHOWN ON THE DRAWING THEY ARE SHOWN IN APPROXIMATE MANNER ONLY. UTILITY LINES MAY EXIST WHERE NONE ARE SHOWN. IF ANY SUCH EXISTING LINES ARE SHOWN, THE LOCATION IS BASED UPON INFORMATION PROVIDED BY THE UTILITY OR PIPELINE COMPANY. THE CONTRACTOR SHALL VERIFY THE LOCATION OF ALL UTILITIES, AND MAY BE OBLIGATE BY THE TIME CONSTRUCTION COMMENCES.
- C. THE ENGINEER HAS UNDERTAKEN NO FIELD VERIFICATION OF THE LOCATION, DEPTH, SIZE OR TYPE OF EXISTING ABOVE AND UNDERGROUND UTILITIES, AND EXISTING PIPELINES, IN AND NEAR THE UNDERGROUND UTILITIES. THE CONTRACTOR SHALL BE RESPONSIBLE FOR NO REPRESENTATION REMAINING HERETO. THE CONTRACTOR SHALL INFORM HIMSELF OF THE LOCATION OF ANY EXISTING ABOVE AND UNDERGROUND UTILITIES, AND EXISTING PIPELINES, IN AND NEAR THE UNDERGROUND UTILITIES. THE CONTRACTOR SHALL BE FULLY RESPONSIBLE FOR ANY DAMAGE CAUSED BY HIS FAILURE TO LOCATE, IDENTIFY AND PRESERVE ANY AND ALL EXISTING ABOVE AND UNDERGROUND UTILITIES, AND EXISTING PIPELINES. THE CONTRACTOR IS URGED TO COMPLY WITH STATE AND FEDERAL REGULATIONS AND THE LOCATION OF THESE LINES, IN PLANNING AND CONDUCTING EXCAVATION WORK.
- D. ALL WORK PERFORMED ON WATER MAINS OWNED BY THE CITY OF SANTA FE IS TO BE CONTRACTED BY A CITY OF SANTA FE PUBLIC UTILITIES DEPARTMENT. CONTRACTORS IS AVAILABLE FROM THE CITY PUBLIC UTILITIES DEPARTMENT.
- E. ALL UTILITY ENGINEERING AND INSTALLATION COSTS ARE TO BE INCLUDED IN THE BID PRICE.

**Keyed Notes**

- ① NEW 6" CLEANOUT
- ② NEW 6" SANITARY SEWER LINE
- ③ NEW 4" SANITARY SEWER LINE
- ④ EXISTING MANHOLE
- ⑤ EXISTING 8" SANITARY SEWER LINE



**SEWER PLAN AND PROFILE**

**integrated**  
design architecture

906 1/2 Park Avenue SW  
Santa Fe, NM 87501  
Tel: (505) 243-3499  
Fax: (505) 243-3583  
info@integrateddesign.com  
www.integrateddesign.com

**RME**  
Santa Fe  
Engineering, Inc.

3209 Mercantile Court, Suite A  
Santa Fe, NM 87507-2959  
Phone: (505) 474-9279  
Fax: (505) 424-4801

**STAGE COACH APARTMENTS**  
DEVELOPMENT PLAN

PROJECT ARCHITECT:  
BOB HALL, AIA

Project #: IDA-10-16-P  
Date: AUGUST 15, 2011

**SEWER PLAN AND PROFILE - LINE A**

By: BRC  
File: 2214UTL.DWG  
Plot Date: 8/11/2011 11:16:53 PM

Sheet 13 of 14